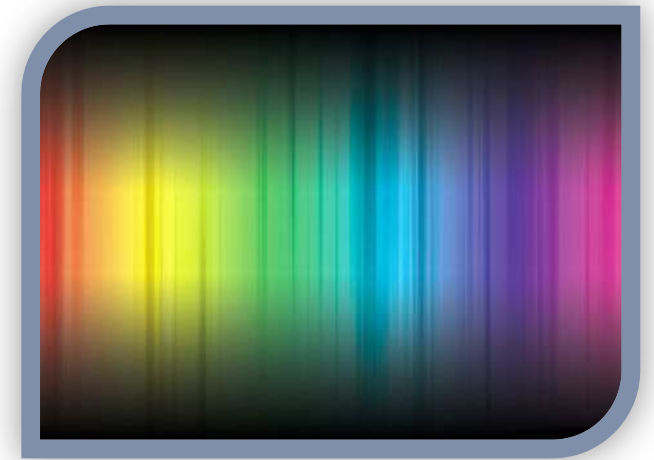


Report



Scientific research to locate the accumulation points
for certain mineral resources on the plots in

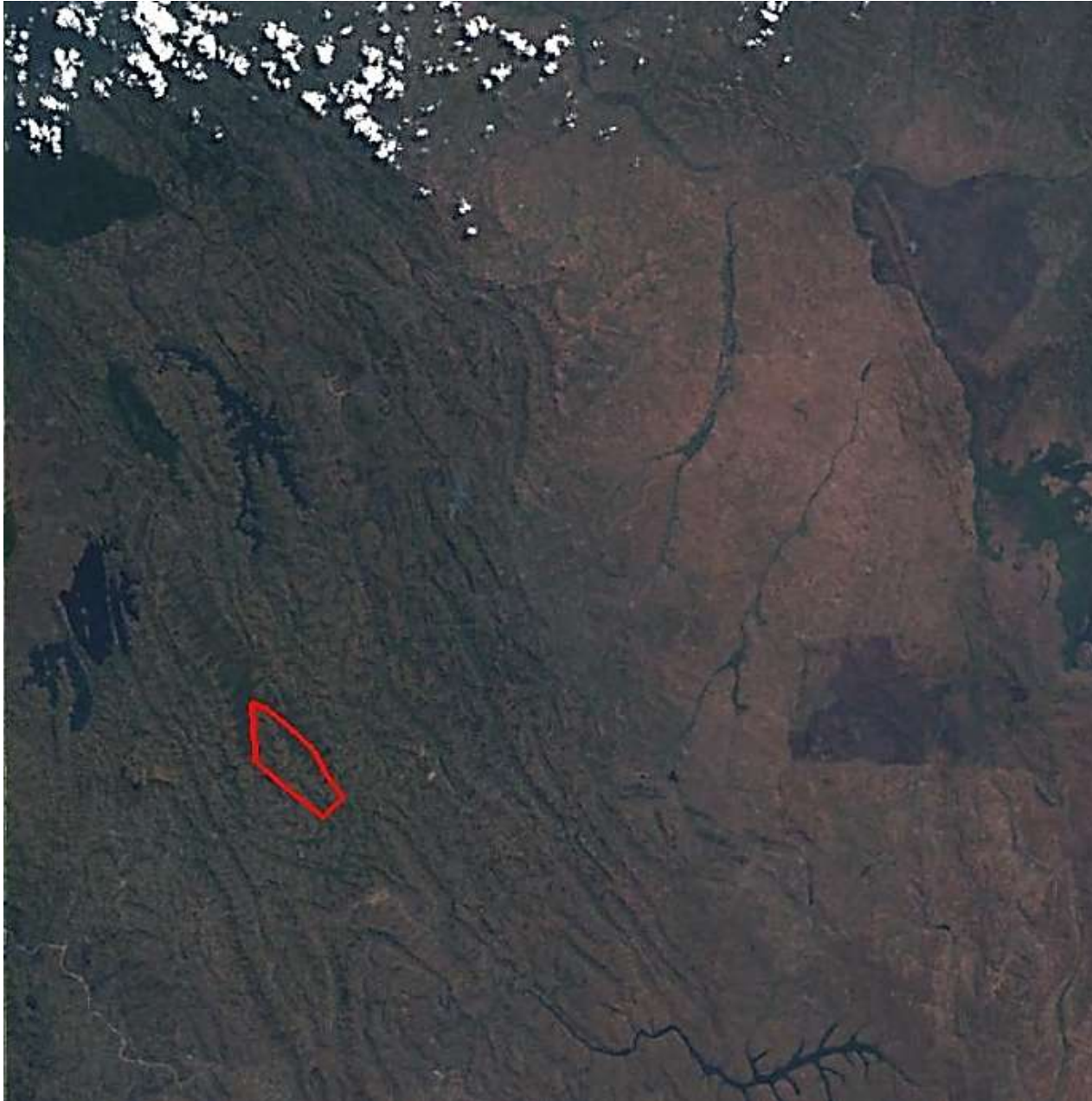
This Report is the outcome of a scientific research done to locate the accumulation points for certain mineral resources on the plots. Construction of a three-dimensional model of deposits.

RESEARCH OVERVIEW

The research is done using the VMF analysis (Verification of Multispectral Forecast) based on the mathematical and multispectral analysis of the plot images. Sequential use of multispectral and mathematical analysis allowed to locate ore deposits for the given area.

OBJECTIVES:

1. Process the space image using the MIV analysis ;
2. Locate **Au** accumulation points;
3. Creating 3D model of a gold deposit.



To do the calculations, the image of the area taken with SENTINEL-2 satellite was used.

Date:

Implement:

Image:

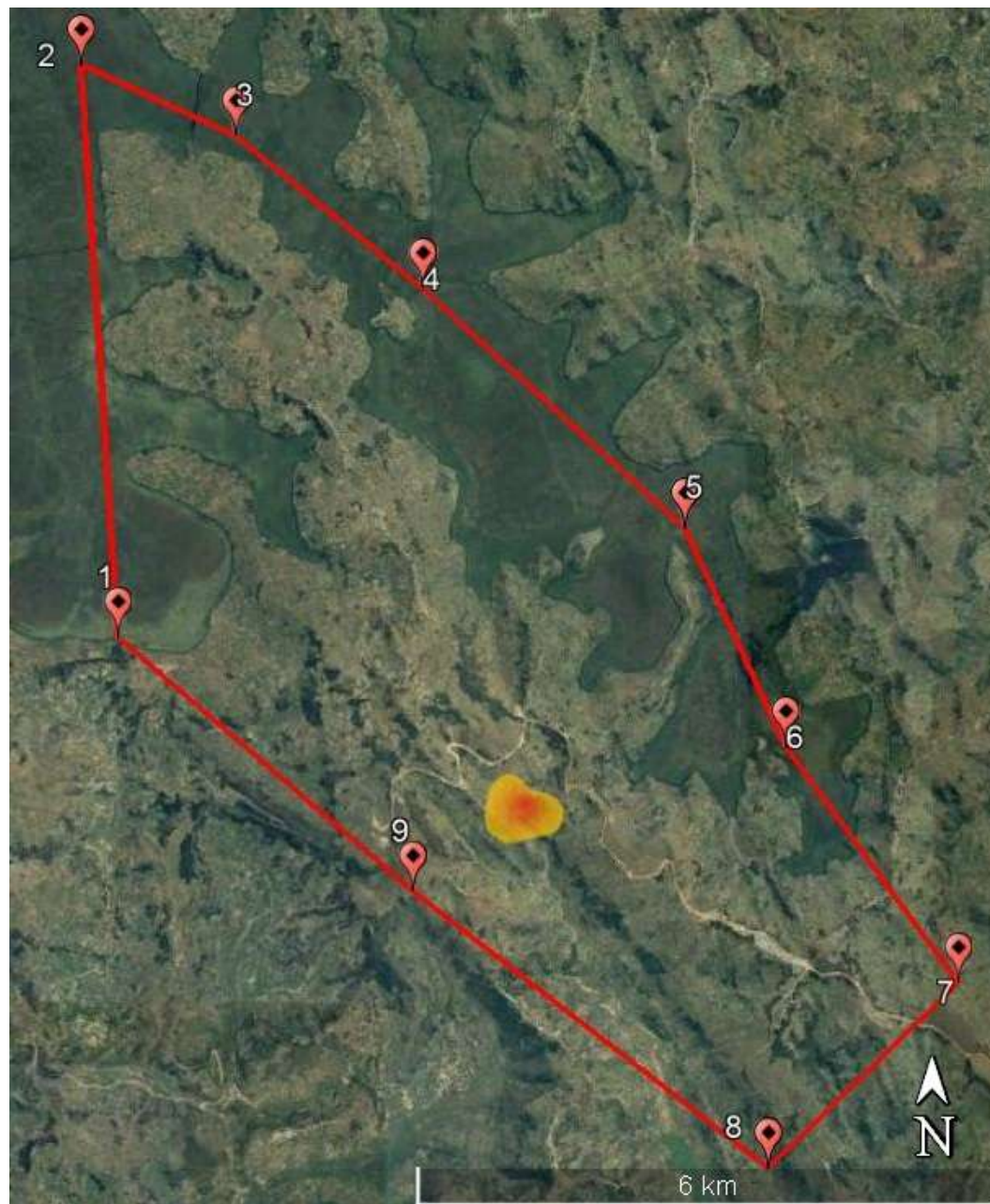
Location on the map



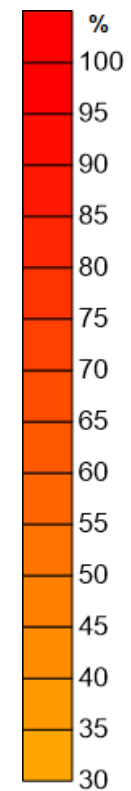
Coordinates corner points of the study area

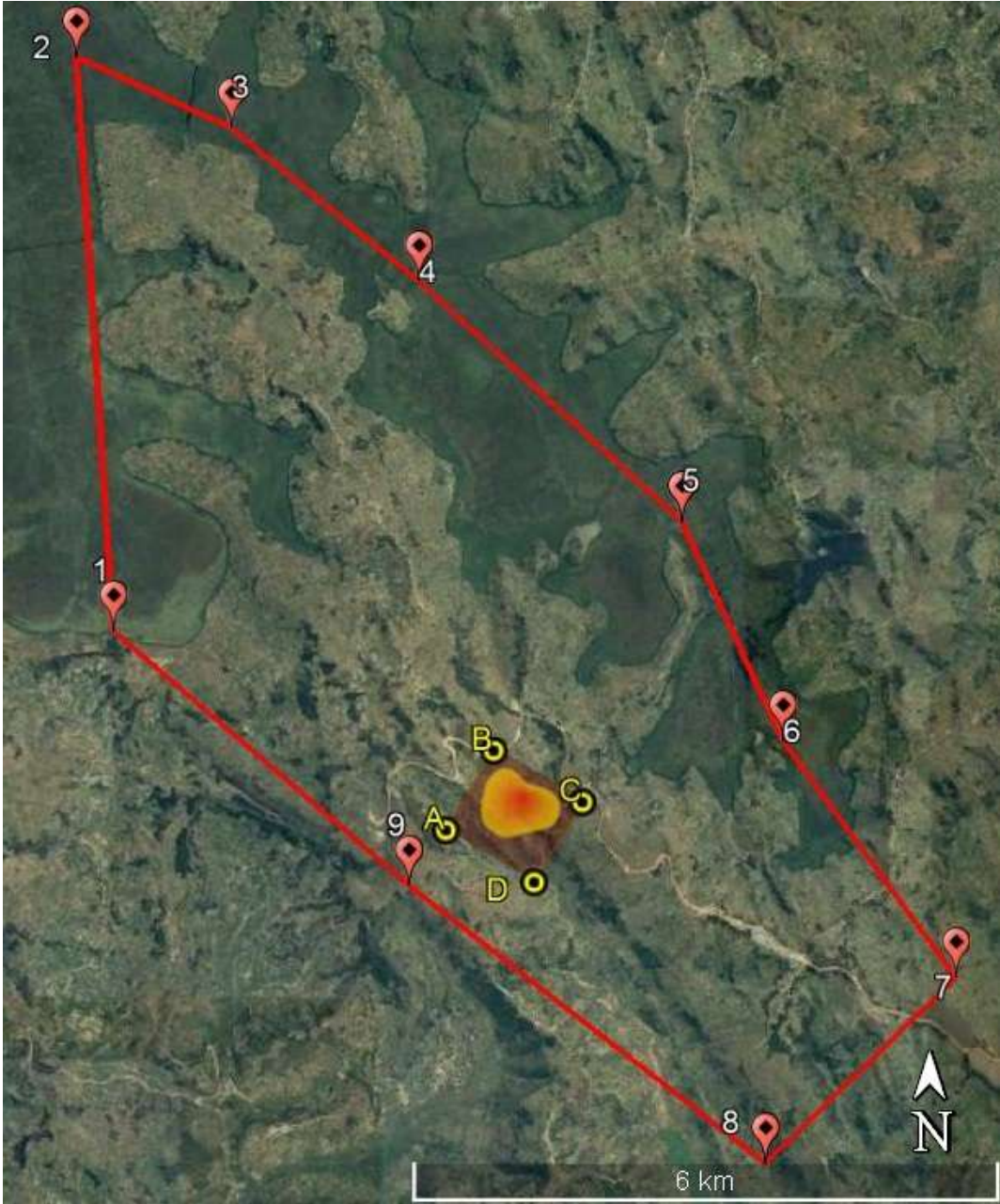
Point number			
1			
2			
3			
4			
5			
6			
7			
8			
9			

The study area is ____sq. km.



Au, placer gold, potential concentration 30-100%





Coordinates corner points of the study area				
A				
B				
C				
D				

The study area is ____ sq. km.

